

Missouri Association of Nursing Home Administrators

2024 Annual Convention

JUNE 2-5, 2024



*Kick Off
Your Summer
with an Unforgettable
MANHA Experience!*

The Resort at the Lake of the Ozarks, MO

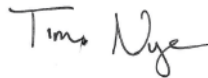
MANHA Convention

Missouri Association of Nursing Home Administrators is pleased to invite you to attend our 2024 Annual Convention. The goal of this conference is to provide meaningful, forward thinking, and real-time education to explore new trends, and identify your strengths and areas for improvement. **"Success is no accident. It is hard work, perseverance, learning, studying, sacrifice and most of all, love of what you are doing or learning to do."** –Pelé

Thank you!



Joseph Shafer
MANHA President



Tim Nye
Convention Chair

Dottie Sharpe

Dottie Sharpe
Executive Director

Cancellation

Advance registration is required. Registrations are due by May 24, 2024. Registration fees will be **increased by \$50.00 after the May 24th due date**. A full refund minus a \$50 processing fee, will be given if requested by May 29, 2024. No refunds will be given after that date. You may send a substitute.

Special Diets

If you have a special diet, please include that information on the registration form or via email to dotties@mlnha.org

Accreditation

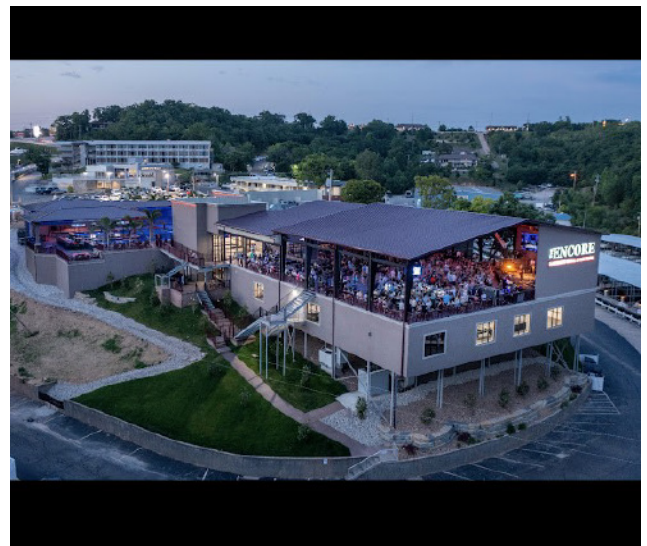
Educational seminars are approved by the Missouri Board of NH Administrators. Approved for 20 total CEUs of which there are a 8 Patient Care CEUs. All attendees will be issued certificates of attendance.

Hotel Information

Rate: \$129/night + \$10 resort fee/night
The Resort, 3080 Bagnell Dam Blvd.
Lake Ozark, Missouri 65049

Reservations: <https://res.windsurfercrs.com/ibe/details.aspx?propertyid=16268&nights=1&checkin=6/2/2024&group=MOASS240602-1555&lang=en-us> or call 573-693-9988

Group Code: Mo Assoc Nursing Home Admin



Schedule

MANHA Convention

Sunday

6/2

| | | |
|---------------|--|------|
| 11:30a-12:30p | Registration | CEUS |
| 12:30p-1:30p | Admission and Discharge Process <i>Presented by Mark Francis</i> | 1 |
| 1:45p-3:15p | Controlling Costs and Operating a Dining Dept. <i>Presented by Amanda Marsh, RDN, LD</i> <i>Speaker Sponsored by Martin Bros.</i> | 1.5 |
| 3:30p-4:30p | Emergency Discharge in LTC <i>Presented by Nicky Martin</i> | 1 PC |

Monday

6/3

| | | |
|----------------|--|------|
| 7:30 A- 8:00 A | Registration | CEUS |
| 8:00a-9:30a | Courageous Leadership - Living a Life of Influence <i>Presented by Dan Meers</i> | 1.5 |
| 9:45 A- 10:45a | Staffing in a LTC World <i>Presented by Mark Francis</i> | 1 |
| 11a-12p | Vision 4 ALL: Be the Inspiration through Goal Setting <i>Presented by Shelly McGuire</i> | 1 |
| 12p-1p | Lunch and General Membership Meeting | |
| 1p-2p | Life After Covid: I've Seen the Future and It's Fun-Shaped <i>Presented by Shelly McGuire</i> | 1 PC |
| 2:15p— 3:15p | Deprescribing - The Art of Reduction <i>Presented by Michelle Caputa, RPh</i> <i>Speaker Presented by Infinium Pharmacy</i> | 1 PC |
| 3:030 - 5:00p | Scavenger Hunt with Vendors <i>Presented by MANHA & Vendors</i> | 1.5 |

Tuesday

6/4

| | | |
|-----------------------|--|---------------|
| 7:30a—8:00a | <i>Registration & breakfast</i> | CEUS |
| 8:00a - 9:00a | Man Down! Creating a Successful Fall Prevention Program <i>Presented by Debbie Pool, BSN, RN, LNHA, QCP, IP</i> | 1 PC |
| 9:15a - 10:15a | Covid Do's and Don'ts <i>Presented by Shari Kist, PhD, RN and Carolyn Grasser, RN, BSN, MPH, CIC</i> | 1 PC |
| 10:30a—11:30a | Fire Sprinkler System Ins and Outs <i>Presented by Skip Johnson</i> <i>Speaker Presented by Johnson Controls Fire Protection</i> | 1 |
| 11:30a-12:30p | Lunch | |
| 12:30p-1:30p | CONCURRENT SESSION Life Safety Code Common Citations and Issues of Concern <i>Presented by Steven Vest</i> | 1 |
| | Fire Marshall <i>Presented by Greg Dickens</i> | |
| 1:45p-3:15p | CONCURRENT SESSION Updates on Wound Regulations in LTC <i>Presented by Martha Kelso</i> <i>Speaker Presented by Wound Care Plus</i> | 1.5 PC |
| | TBD <i>Presented by</i> | |
| 3:30p-5:00p | Family Feud <i>Presented by Toni Travis and Tim Nye</i> | 1.5 PC |

Wednesday

6/5

| | | |
|-----------------------|---|-------------|
| 7:30a—8:30a | <i>Registration & breakfast buffet</i> | CEUS |
| 8:30a - 9:30a | Emergency Disaster Plan <i>Presented by Dorinda Boadi, MBA, BSN, RN, BS</i> | 1 |
| 9:45a - 11:15a | DHSS Updates <i>Presented by Laura Smith</i> | 1.5 |

12:30-1:30pm

Admission and Discharge Process

1 CEU

This session will discuss how to create a successful admission and discharge process, mitigate communication pitfalls, and increase engagement of the entire team in admission and discharge process.

Mark Francis

1:45- 3:15PM

Controlling Costs and Operating a Dining Dept.

1.5 CEU

This presentation will look at nationwide PPDs and examine what exactly goes into calculating a realistic PPD. And then we will look at ways leadership can help control costs with in the dining department through different operational policies and procedures, technology and use of a registered dietitian/CDM.

Amanda Marsh

3:30-4:30PM

Emergency Discharge In LTC

1 PC

This session will provide a review of current federal and state laws regarding involuntary emergency discharges. We will discuss what must be considered when considering an emergency discharge, as well as the regulatory process that must be followed. We will navigate the gray areas and review scenarios for appropriate emergency discharge procedures.

Nicky Martin

Monday, June 3, 2024

8:00-

Courageous Leadership - Living a Life of Influence

9:30am

1.5 CEU

On November 23, 2013, Dan Meers came within inches of losing his life while practicing a bungee jump and zip line stunt at Arrowhead Stadium, home of the Kansas City Chiefs. What Dan anticipated being the thrill of a lifetime ended up being the spill of a lifetime. The stunt went terribly wrong and Dan plummeted 75 feet before crashing into the stadium seats. Miraculously Dan survived. He spent 9 days in the hospital and got some really big scars. Dan smiles when he says, "Scars are just Tattoos that come with a Cool Story". During this powerful presentation Dan shares his incredible story and the important lessons that he learned during his long road to recovery about leadership and about life.

Dan Meers

9:45-10:45am

Staffing in a LTC World

1 CEU

Participants will identify the current CMS regulations for staffing in LTC, recognize the primary drivers of employee engagement, and apply principles of employee engagement to a long-term care setting.

Mark Francis

11:00-12:00p

Vision 4 ALL: Be the Inspiration Through Goal Setting

1 CEU

This session will motivate you to motivate your staff! If you manage staff and your staff manage staff, then this program is for you! Learn some exciting ways to ignite your managers to be inspired by looking into the future of their department. This program gives some ideas on how to unite your different departments under your leadership, visions, and goals while the manager initiates goals within their department. Keeping all departments resident focused and working toward staff empowerment and motivation.

*Shelly
McGuire*

1:00p-2:00p

Life After Covid: I've Seen the Future and It's Fun-Shaped!

1 PC

Is your program old & stale? Does it need a facelift since Covid? Have fun while learning about how to revamp your community's activity program. Discover techniques for programming by personalized interests, engaging more residents, and innovative activities that your residents will love and find meaningful. While residents have fun doing them

*Shelly
McGuire*



Monday, June 3, 2024

2:15-3:45p

Deprescribing - The Art of Reduction

1 PC

Michelle Caputa, RPh

In the US, approx. 50% of NH residents receive 9 or more medications. Polypharmacy increases the risk of adverse drug events including drug interactions, falls, decreased mobility, decreased cognitive ability, decreased quality of life, hospitalizations, and even death. Polypharmacy also increases healthcare costs. Deprescribing offers many benefits to residents as well as LTC facilities. However, resistance to deprescribing is often encountered and barriers exist. The deprescribing process as part of a team approach will be discussed along with tools for deprescribing.

4:00-5:30p

Scavenger Hunt with Vendors

1.5 CEU

MANHA

This educational scavenger hunt will get you up and out of your seats and your thinking caps on! Solve the real life problem and find the vendor that will help you get the information/education you need to fix it!

6p-8p

Join us at the SKY BAR for our annual Monday night Reception.

Tuesday, June 4, 2024

8:00-9:00a

Man Down! Creating a Successful Fall Prevention Program

1PC

Debbie Pool

Mr. Smith is found on the floor for the third time this week. Now what? We will review F689 fall-related guidance and definitions, outline program components and incorporate tools in the development of a culture of safety.

Objectives: Review regulatory guidance and fall-related definitions

Describe ways to proactively address fall prevention

Identify suggestions for post-fall interventions

Demonstrate integration of tools into a facility fall prevention program

9:15-10:15a

Covid Do's and Don'ts

1PC

Shari Kist & Carolyn Gasser

COVID Do's & Don'ts

1. Summarize current infection prevention & control guidelines from CDC, CMS, and DHSS.
2. Apply current guidance to commonly encountered clinical situations.
3. Relate quality improvement processes to infection management.

Facility leaders continue to be challenged with outbreaks of COVID and other respiratory illnesses. It is essential that outbreak management be consistent with current best practices. This session will apply recommended COVID management from a practical perspective. Monitoring & auditing processes also will be included.

10:30-11:30a

Fire Sprinkler System Ins and outs

1 CEU

Skip Johnson

This presentation will discuss the importance, the ins and outs, and the maintenance of your fire sprinkler systems.

12:30-1:30P

CONCURRENT

1 CEU

Steven Vest

Life Safety Code Common Citations and Issues of Concern

This presentation is designed to help you and your staff to identify LSC concerns and to help give you the information to create systems to eliminate common citations.

Greg Dickens

Fire Safety Update (RCF/ALF)

This session will cover the fire safety inspections for facilities and locations which are licensed or certified by several state agencies.

1:45-3:15P

CONCURRENT

1.5 PC

Martha Kelso

Updates on Wound Regulations in Long-Term Care

October 1st, 2023, brought about some wound-care regulatory changes. What are the changes, and how do they impact the coding of Section M of the MDS? What ICD-10 codes are appropriate? How should the new changes be implemented, coded, and captured? This presentation will cover the changes specific to wound care, designed to keep you updated on the most recent changes and best practice principles. We will review current literature on end-of-life wounds and discuss how end-of-life wounds should be documented and noted.

Tuesday, June 4, 2024

1:45-3:15P TBD - DSDS staff working on presentation for RCE/ALF.

1.5 PC

1:45-3:15P FAMILY FEUD/NAME THAT TUNE!!

1.5 PC

**Toni Travis
& Tim Nye**

And now, brace yourselves for Toni and Tim's latest venture - a presentation like no other. Get ready to play Family Feud, where learning meets laughter. Who doesn't enjoy some good music! Family Feud will focus on survey citations, infection control and critical pathways. Name that Tune will have you tapping your toes and testing your knowledge, all while rocking out to the beats of the industry's greatest hits. Name that tune will focus on songs that have to do with medical terms and symptoms that are common in LTC.

So, dear administrators, mark your calendars and don your finest **pink and white attire** because Toni and Tim are about to take you on a journey where education meets entertainment, where convention meets creativity, and where long-term care has never been so much fun. Get ready to laugh, learn, and remember the name - we are the game changers of long term care!

Wednesday, June 5, 2024

8:30-9:30am Emergency Disaster Plan - What You Need to Know and How to Execute it Properly

1 CEU

Dorinda Boadi

Presentation discussion will include QIO overview, our HQI EPP assessment tool, the 4 elements of the assessment tool, ways we are completing EPP reviews, recent E tag citations within MO, healthcare coalition contacts. How to schedule a review, and our new SME Jordan.

9:45—

DHSS Update

11:15am

This session will focus on state and federal regulatory changes and updates that have an impact on long-term care communities.

1.5 CEU

Laura Smith



MANHA

Membership 2024-25

Regular Dues \$250, Auxiliary \$150



Name: _____ License No.: _____

Home Address: _____

City/State/Zip: _____ County: _____

Email Address: _____

Corporate Name: _____

Facility Name (if different): _____

Facility/Business Address: _____

Facility/Business City/State/Zip: _____

Business Phone: _____ Business Fax: _____

Mail sent to: Business Home Information Listed on Web Page: Business Home

Mail: MANHA, 915 Southwest Blvd. Ste J., Jefferson City, MO 65109 Fax: (573)634-8590 Email: dotties@mlnha.org

Method of Payment: Check MC Visa AE

| | | | |
|------------------|--------|----------------|--|
| Card #: | | Exp. Date: | |
| Name on Card: | | Security Code: | |
| Billing Address: | | | |
| City: | State: | Zip Code: | |

Registration

MANHA Convention

| Packages | Please fax registrations to: 573-634-8590 or email to: dotties@mlnha.org | |
|---------------------------------|---|---------------------|
| MANHA Member Administrators | Includes all educational sessions (total 20 CEUs –6 possible PC CEUs) & social functions, 3 breakfast, 2 lunch, 1 reception & breaks | \$395 |
| Prospective MANHA Member | Includes all educational sessions (total 20 CEUs –6 possible PC CEUs) & social functions, 3 breakfast, 2 lunch, 1 reception & breaks | \$495 |
| Staff/Associate Members /Spouse | Same as Member Administrator (no Administrator CEUs), Certificate of Attendance | \$275 |
| Monday Only | Includes educational sessions (total 7 CEU's including 2PC CEU's), lunch and breaks | \$175 |
| Tuesday Only | Includes educational sessions (total 7 CEU's including 5 PC CEU), lunch and breaks | \$175 |
| Sunday or Wednesday Only | Sunday Includes educational session (Total 3.5 CEU's)including 1 PC & breaks. Wednesday includes educational session (total 2.5 CEU's) Breakfast and breaks. | \$110 (each day) |

Attendees

To become a member for discount pricing or renew see back page for the membership form!

| | | | |
|-----------|--|----------|----------|
| Name: | | Email: | |
| Facility: | | Package: | Admin #: |
| Name: | | Email: | |
| Facility: | | Package: | Admin #: |
| Name: | | Email: | |
| Facility: | | Package: | Admin #: |

Payment Method

- Credit Card—Please enter information below or pay online at www.mlnha.org
- Check made payable to MANHA
- Invoice emailed to:

Invoice must be paid prior to conference

Amount to be Charged: _____

Credit Card

| | |
|-----------------|---------------|
| Card Number | Exp. Date |
| Name on Card | Security Code |
| Billing Address | |
| City | State |
| | Zip Code |