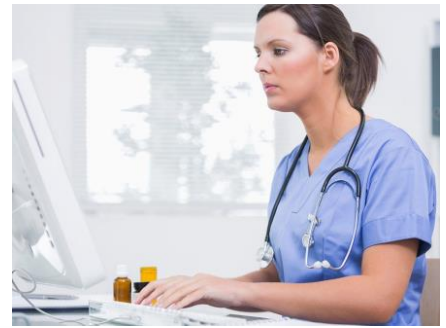


# Medicare from Start to Finish

Cost: \$155 per person

7.0 Admin hours



This workshop will explore factors impacting SNF PPS assessment schedule, PDPM basics, and consolidating billing that can impact the financial facet of the facility. It also explains Medicare eligibility, coverage, and skilling criteria. The SNF QRP on demand reports that provide information about the Medicare Part A stays in your SNF will also be reviewed. This workshop is geared towards those individuals working in long-term care who have a leadership role such as ADM, DON, ADON, or MDS Coordinator.

## Dates and Formats

**January 17, 2023**

*Live virtual workshop*

**March 22, 2023**

*In-Seat Workshop*

MHCA Office  
Jefferson City, MO

**July 12, 2023**

*In-Seat Workshop*

MHCA Office  
Jefferson City, MO

**September 13 2023**

*In-Seat Workshop*

MHCA Office  
Jefferson City, MO

**November 8, 2023**

*Live virtual workshop*

**For Complete Details and to Register Visit:**

<https://www.mohealthcare.com/education-events/workshops-ceu-sessions/>

### Presenters:

**Stacey Bryan**, BSN, RN, RAC-CT; State RAI Coordinator, Section for Long Term Care Regulation

**Crystal Plank**, BSN, RN, RAC-CTA; QIPMO Clinical Educator, Sinclair School of Nursing



# RAI Process from Start to Finish

Cost: \$305 per person

14.0 Admin hours



This 2-day workshop will look at the RAI process from the beginning to end. The MDS is used for both a clinical assessment and a financial assessment and this workshop will discuss the rules on scheduling these assessments and meeting the requirements individually and combined. This workshop reviews how to gain access to and read the MDS reports to self-audit your RAI process and look at your QMs. This workshop designed for the MDS Coordinator or Care Plan Coordinator, or DON or ADM who needs a better understanding of the complexity of the RAI Process.

## Dates and Formats

**February 7-8, 2023**  
*Live virtual workshop*

**April 4-5, 2023**  
*In-Seat Workshop*  
Courtyard by Marriott  
Jefferson City, MO

**August 8-9, 2023**  
*In-Seat Workshop*  
Courtyard by Marriott  
Jefferson City, MO

**October 17-18, 2023**  
*In-Seat Workshop*  
Capitol Plaza Hotel  
Jefferson City, MO

**December 5-6, 2023**  
*Live virtual workshop*

## For Complete Details and to Register Visit:

<https://www.mohealthcare.com/education-events/workshops-ceu-sessions/>

### Presenters:

**Stacey Bryan**, BSN, RN, RAC-CT; State RAI Coordinator, Section for Long Term Care Regulation  
**Crystal Plank**, BSN, RN, RAC-CTA; QIPMO Clinical Educator, Sinclair School of Nursing

