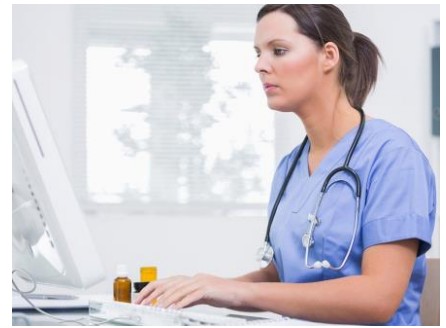


Medicare from Start to Finish

Cost: \$155 per person

7.0 Admin hours



This workshop will explore factors impacting SNF PPS assessment schedule, PDPM basics, and consolidating billing that can impact the financial facet of the facility. It also explains Medicare eligibility, coverage, and skilling criteria. The SNF QRP on demand reports that provide information about the Medicare Part A stays in your SNF will also be reviewed. This workshop is geared towards those individuals working in long-term care who have a leadership role such as ADM, DON, ADON, or MDS Coordinator.

Dates and Formats

January 17, 2023

Live virtual workshop

March 22, 2023

In-Seat Workshop

MHCA Office
Jefferson City, MO

July 12, 2023

In-Seat Workshop

MHCA Office
Jefferson City, MO

September 13 2023

In-Seat Workshop

MHCA Office
Jefferson City, MO

November 8, 2023

Live virtual workshop

For Complete Details and to Register Visit:

www.mohealthcare.com/page/MDSTraining

Presenters:

Stacey Bryan, BSN, RN, RAC-CT; State RAI Coordinator, Section for Long Term Care Regulation

Crystal Plank, BSN, RN, RAC-CTA; QIPMO Clinical Educator, Sinclair School of Nursing



RAI Process from Start to Finish

Cost: \$305 per person

14.0 Admin hours



This 2-day workshop will look at the RAI process from the beginning to end. The MDS is used for both a clinical assessment and a financial assessment and this workshop will discuss the rules on scheduling these assessments and meeting the requirements individually and combined. This workshop reviews how to gain access to and read the MDS reports to self-audit your RAI process and look at your QMs. This workshop designed for the MDS Coordinator or Care Plan Coordinator, or DON or ADM who needs a better understanding of the complexity of the RAI Process.

Dates and Formats

February 7-8, 2023
Live virtual workshop

April 4-5, 2023
In-Seat Workshop
Courtyard by Marriott
Jefferson City, MO

August 8-9, 2023
In-Seat Workshop
Courtyard by Marriott
Jefferson City, MO

October 17-18, 2023
In-Seat Workshop
Courtyard by Marriott
Jefferson City, MO

December 5-6, 2023
Live virtual workshop

For Complete Details and to Register Visit:
www.mohealthcare.com/page/MDSTraining

Presenters:

Stacey Bryan, BSN, RN, RAC-CT; State RAI Coordinator, Section for Long Term Care Regulation
Crystal Plank, BSN, RN, RAC-CTA; QIPMO Clinical Educator, Sinclair School of Nursing

