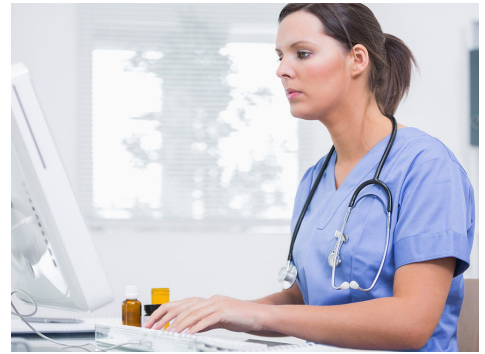


# Medicare from Start to Finish

Currently all Medicare from Start to Finish courses are offered as virtual workshops only.

**Cost: \$155 per person | 7.5 Admin hours**



This 2-day, 3-part virtual workshop will begin with how to gain access to and read the MDS reports from CASPER in order to self-audit your RAI process. The completion of the MDS is becoming more difficult and confusing, this workshop will help clear up the confusion surrounding this process. This workshop is geared towards those individuals working in long-term care who have a leadership role such as ADM, DON, ADON, or MDS Coordinator.

## January 12-13, 2022

Part 1 | Jan 12 | 9:00 am - 11:30 am  
Part 2 | Jan 12 | 1:00 pm - 3:30 pm  
Part 3 | Jan 13 | 9:00 am - 11:30 am

## March 9-10, 2022

Part 1 | Mar 9 | 9:00 am - 11:30 am  
Part 2 | Mar 9 | 1:00 pm - 3:30 pm  
Part 3 | Mar 10 | 9:00 am - 11:30 am

### Presenters:

**Carol Siem**, MSN, RN, BC, GNP, RAC-CTA; QIPMO Clinical Educator, Sinclair School of Nursing  
**Stacey Bryan**, BSN, RN, RAC-CT; State RAI Coordinator, Section for Long Term Care Regulation  
**Crystal Plank**, BSN, RN, RAC-CTA; QIPMO Clinical Educator, Sinclair School of Nursing

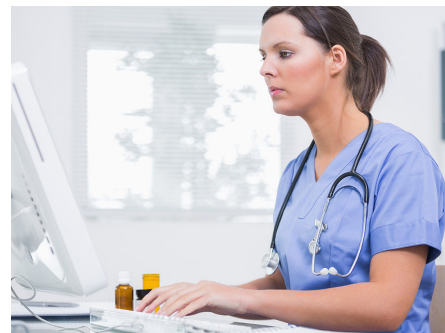
[Register Now!](#)



# RAI Process from Start to Finish

Currently all RAI Process from Start to Finish courses are offered as virtual workshops only.

**Cost: \$305 per person | 12.0 Admin hours**



This virtual workshop will look at the RAI process from the beginning to end. The MDS is used for both a clinical assessment and a financial assessment and this workshop will discuss the rules on scheduling these assessments and meeting the requirements individually and combined. This workshop is for the RN or LPN with the title of MDS Coordinator or Care Plan Coordinator, or DON or ADM who needs a better understanding of the complexity of the RAI Process.

## February 23-25, 2022

Part 1 | Feb 23 | 9:00 am - 11:30 am  
Part 2 | Feb 23 | 1:00 pm - 3:30 pm  
Part 3 | Feb 24 | 9:00 am - 11:30 am  
Part 4 | Feb 24 | 1:00 pm - 3:30 pm  
Part 5 | Feb 25 | 9:00 am - 11:30 am

## April 11-13, 2022

Part 1 | Apr 11 | 1:00 pm - 3:30 pm  
Part 2 | Apr 12 | 9:00 am - 11:30 am  
Part 3 | Apr 12 | 1:00 pm - 3:30 pm  
Part 4 | Apr 13 | 9:00 am - 11:30 am  
Part 5 | Apr 13 | 1:00 pm - 3:30 pm

### Presenters:

**Carol Siem**, MSN, RN, BC, GNP, RAC-CTA; QIPMO Clinical Educator, Sinclair School of Nursing  
**Stacey Bryan**, BSN, RN, RAC-CT; State RAI Coordinator, Section for Long Term Care Regulation  
**Crystal Plank**, BSN, RN, RAC-CTA; QIPMO Clinical Educator, Sinclair School of Nursing

[Register Now!](#)

