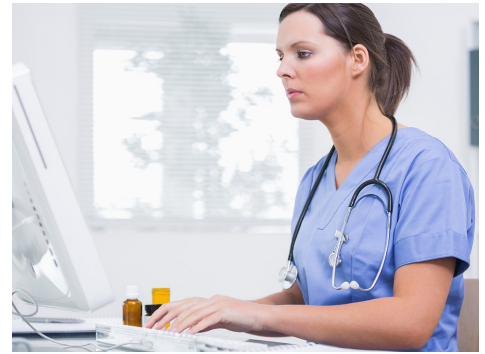


Medicare from Start to Finish

Due to the COVID-19 pandemic, the Medicare From Start to Finish courses are now being offered as virtual workshops!



Cost: \$155 per person | 6.0 Admin hours

This 2-day, 3-part virtual workshop will begin with how to gain access to and read the MDS reports from CASPER in order to self-audit your RAI process. The completion of the MDS is becoming more difficult and confusing, this workshop will help clear up the confusion surrounding this process. This workshop is geared towards those individuals working in long-term care who have a leadership role such as ADM, DON, ADON, or MDS Coordinator.

June 15-16, 2021

Part 1 | June 15 | 9:00 am - 11:00 am

Part 2 | June 15 | 1:30 pm - 4:00 pm

Part 3 | June 16 | 1:30 pm - 4:00 pm

September 9-10, 2021

Part 1 | Sept 9 | 9:00 am - 11:00 am

Part 2 | Sept 9 | 1:30 pm - 4:00 pm

Part 3 | Sept 10 | 9:00 am - 11:30 am

November 9-10, 2021

Part 1 | Nov 9 | 9:00 am - 11:00 am

Part 2 | Nov 9 | 1:30 pm - 4:00 pm

Part 3 | Nov 10 | 1:30 pm - 4:00 pm

Presenters:

Carol Siem, MSN, RN, BC, GNP, RAC-CTA; QIPMO Clinical Educator, Sinclair School of Nursing

Stacey Bryan, BSN, RN, RAC-CT; State RAI Coordinator, Section for Long Term Care Regulation

Crystal Plank, BSN, RN, RAC-CTA; QIPMO Clinical Educator, Sinclair School of Nursing

[Register Now!](#)



RAI Process from Start to Finish

Due to the COVID-19 pandemic, the RAI Process From Start to Finish courses are now being offered as virtual workshops!



Cost: \$305 per person | 10.0 Admin hours

This virtual workshop will look at the RAI process from the beginning to end. The MDS is used for both a clinical assessment and a financial assessment and this workshop will discuss the rules on scheduling these assessments and meeting the requirements individually and combined. This workshop is for the RN or LPN with the title of MDS Coordinator or Care Plan Coordinator, or DON or ADM who needs a better understanding of the complexity of the RAI Process.

Dates & Times:

August 10-12, 2021

Part 1 | Aug 10 | 9:00 am - 11:30 am Part 2 | Aug 10 | 1:30 pm - 4:00 pm
Part 3 | Aug 11 | 9:00 am - 11:30 am Part 4 | Aug 11 | 1:30 pm - 4:00 pm
Part 5 | Aug 12 | 9:00 am - 11:30 am

October 5-7, 2021

Part 1 | Oct 5 | 9:00 am - 11:30 am
Part 2 | Oct 5 | 1:30 pm - 4:00 pm
Part 3 | Oct 6 | 9:00 am - 11:30 am
Part 4 | Oct 7 | 9:00 am - 11:30 am
Part 5 | Oct 7 | 1:30 pm - 4:00 pm

December 7-9, 2021

Part 1 | Dec 7 | 9:00 am - 11:30 am
Part 2 | Dec 7 | 1:30 pm - 4:00 pm
Part 3 | Dec 8 | 9:00 am - 11:30 am
Part 4 | Dec 9 | 9:00 am - 11:30 am
Part 5 | Dec 9 | 1:30 pm - 4:00 pm

Presenters:

Carol Siem, MSN, RN, BC, GNP, RAC-CTA; QIPMO Clinical Educator, Sinclair School of Nursing
Stacey Bryan, BSN, RN, RAC-CT; State RAI Coordinator, Section for Long Term Care Regulation
Crystal Plank, BSN, RN, RAC-CTA; QIPMO Clinical Educator, Sinclair School of Nursing

[Register Now!](#)

