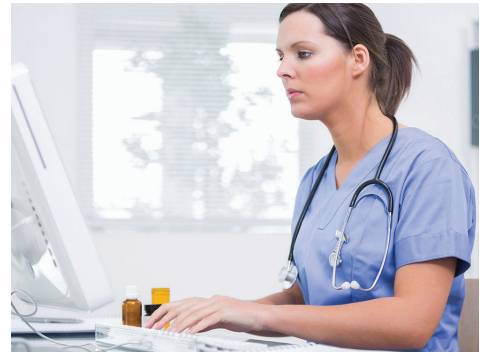


RAI Process from Start to Finish

Due to the COVID-19 pandemic, the RAI Process From Start to Finish courses are now being offered as virtual workshops!



Cost: \$305 per person | 10.0 Admin hours

This 5-part virtual workshop will look at the RAI process from the beginning to end. The MDS is used for both a clinical assessment and a financial assessment and this workshop will discuss the rules on scheduling these assessments and meeting the requirements individually and combined. From coding the MDS, we will then look at the CAA to care plan process. This workshop is for individuals in long-term care who coordinate and/or code the MDS. Typically, this is an RN or LPN with the title of MDS Coordinator or Care Plan Coordinator. This is also for the DON or ADM who needs a better understanding of the complexity of the RAI Process.

Dates & Times

March 16-18, 2021

Part 1 | Mar 16 | 9:00 am - 11:00 am
Part 2 | Mar 16 | 1:30 pm - 3:30 pm
Part 3 | Mar 17 | 9:00 am - 11:00 am
Part 4 | Mar 17 | 1:30 pm - 3:30 pm
Part 5 | Mar 18 | 1:30 pm - 4:00 pm

May 4-6, 2021

Part 1 | May 4 | 9:00 am - 11:00 am
Part 2 | May 4 | 1:30 pm - 4:00 pm
Part 3 | May 5 | 9:00 am - 11:00 am
Part 4 | May 6 | 9:00 am - 11:00 am
Part 5 | May 6 | 1:30 pm - 4:00 pm

Presenters:

Carol Siem, MSN, RN, BC, GNP, RAC-CTA; QIPMO Clinical Educator, Sinclair School of Nursing
Stacey Bryan, BSN, RN, RAC-CT; State RAI Coordinator, Section for Long Term Care Regulation
Crystal Plank, BSN, RN, RAC-CTA; QIPMO Clinical Educator, Sinclair School of Nursing

Register Now!



Register online at [www.mohealthcare.com/page/MDS Training](http://www.mohealthcare.com/page/MDS%20Training)